

## Modular Preparation 1400 mm Cupboard Base for Sink Top

ITEM # \_\_\_\_\_  
 MODEL # \_\_\_\_\_  
 NAME # \_\_\_\_\_  
 SIS # \_\_\_\_\_  
 AIA # \_\_\_\_\_



121827 (TEL2S14)

Cupboard Base for Sinks  
Top, 1400mm

### Short Form Specification

#### Item No.

Constructed entirely in 304 AISI stainless steel. Front and rear longitudinal stainless steel c-channel reinforcement. Easily removable sliding doors with sound deadening internal and external panels have stainless steel bearings on the top and a hidden runner on the bottom. 150mm height-adjustable (0/+90mm) oversized feet (65x65mm) can be removed for masonry installation. 45° degree internal side corner junction system.

### Main Features

- Masonry installation possible by simply removing feet.
- Extremely easy to clean thanks to the smooth edges.

### Construction

- Mounted on 150 mm height adjustable (0/+90 mm) oversized (65x65 mm) feet.
- Front and rear lengthwise stainless steel c-channel reinforcement, 15/10 (16 gauges).
- Internal sides supporting the structure to have 45° degrees internal side corners junction system.
- 30 mm high middle-shelf in AISI 304 stainless steel, height-adjustable in 3 positions, with inner double fold to eliminate gaps between sides and back.
- Sliding doors, with sound deadening internal and external panels, run on the upper part on the s/s bearings and on the lower part on a hidden runner. Doors are easy to remove thus facilitating cleaning procedures.
- Constructed entirely in AISI 304 Stainless Steel with Scotch Brite finish.

### Optional Accessories

- Stainless steel plinth, 1400mm PNC 855830 ☐
- Stainless steel plinth, 1500mm PNC 855831 ☐
- Stainless steel plinth, 1600mm PNC 855832 ☐
- Stainless steel plinth, 1700mm PNC 855833 ☐
- Stainless steel plinth, 1800mm PNC 855834 ☐
- Stainless steel plinth, 1900mm PNC 855835 ☐
- Stainless steel plinth, 2000mm PNC 855836 ☐
- Stainless steel plinth for end elements, 700mm depth PNC 855837 ☐
- Stainless steel plinth for end elements, central installation, 700mm depth PNC 855838 ☐
- Stainless steel plinth, 2400mm PNC 855839 ☐

APPROVAL: \_\_\_\_\_

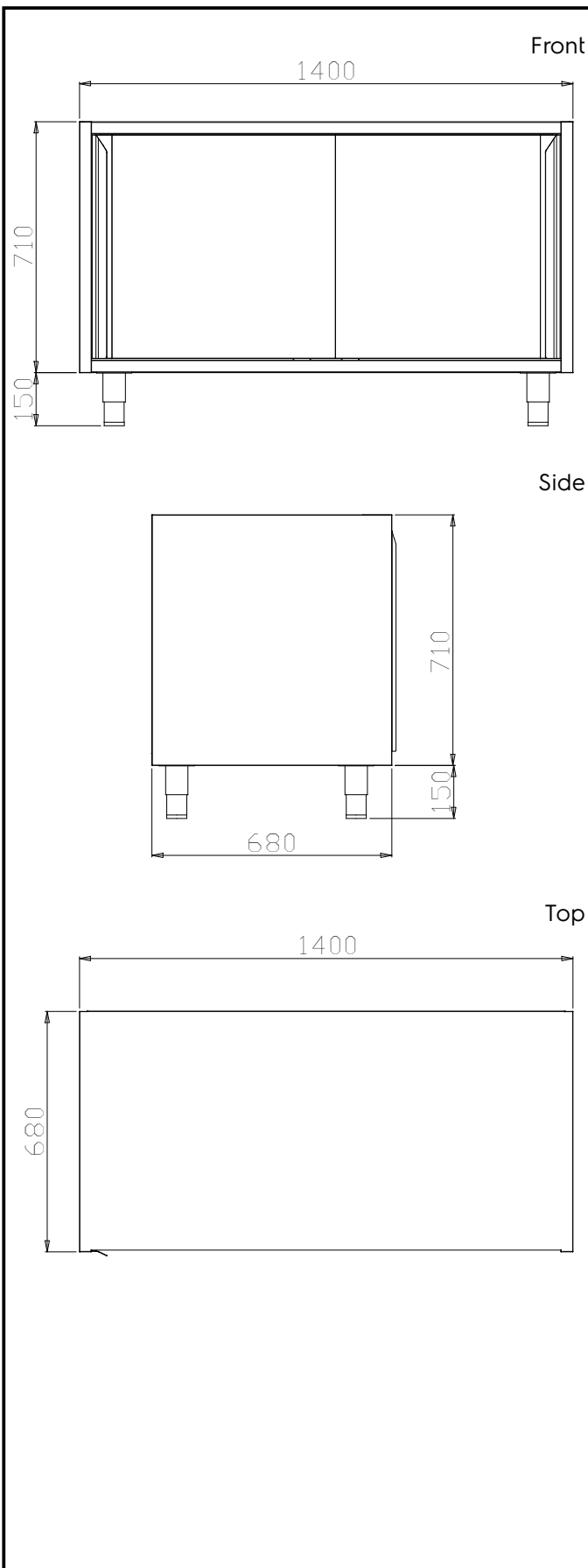


**Electrolux**  
PROFESSIONAL

## Modular Preparation 1400 mm Cupboard Base for Sink Top

### Key Information:

Cabinet width:	
121827 (TEL2S14)	1320 mm
Cabinet depth:	570 mm
Cabinet height:	610 mm
N° of doors:	2
Door Type:	Sliding
External dimensions, Width:	1400 mm
External dimensions, Depth:	680 mm
External dimensions, Height:	860 mm
Net weight:	44 kg



Modular Preparation  
1400 mm Cupboard Base for Sink Top

The company reserves the right to make modifications to the products without prior notice. All information correct at time of printing.

2025.06.30